

CASE STUDY



Bluewater Wind Technical Support, Delaware

NATIONWIDE OFFICES

Corporate

25 Nashua Road
Bedford, New Hampshire 03110
603.472.5191

New Hampshire

Hampton
Westmoreland

Delaware

Lewes

Maine

Falmouth

Massachusetts

Falmouth

New York

West Haverstraw

Pennsylvania

Drumore
Stowe

South Carolina

Aiken

Washington

Stevenson
Vancouver
Wenatchee

Wisconsin

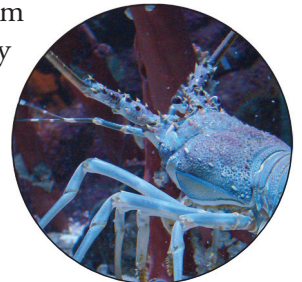
Verona

www.normandeu.com

Bluewater Wind Technical Support, Delaware

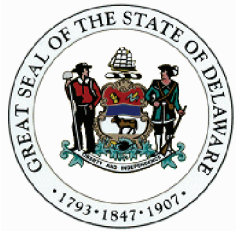
BACKGROUND

The State of Delaware issued a Request for Proposals to select a project that would supply the State with 600 Mw of energy from a renewable energy source. Delaware's interest in wind energy has grown as the state grapples with increased energy demand, rising energy costs, and environmental concerns related to pollutants from fossil fuel-based power plants. State legislators initiated the quest for better energy answers when they passed legislation requiring Delmarva Power and Light, the state's largest electric utility, to provide stable-priced electricity to its customers. The state also required that 10% of electricity generation come from renewable sources no later than 2018. Delaware is uniquely suited to lead the way in offshore wind energy as confirmed by a University of Delaware study of offshore wind. The Bluewater Wind project was selected from among several fossil fuel projects as the right energy source to meet the State of Delaware's future needs.



THE CHALLENGE

Bluewater Wind is proposing to build an offshore wind project at one of two possible sites. The proposed sites, located in the Atlantic Ocean, are referenced as Atlantic North and Atlantic South and have a 600 megawatt nameplate capacity at each site. A third site was initially proposed to be located in Delaware Bay but after careful consideration, further study, and input from Delaware's leaders, was withdrawn as a potential site. Both of the proposed offshore sites have their own characteristics which make them a viable location for energy generation. Each proposed site will be able to offer stable-priced, pollution free, renewable energy for Delaware's citizens. The Bluewater Wind Team, which includes Normandeu Associates, is in the process of identifying which of the two proposed sites would provide the best alternative in terms of protecting the environment, preserving human uses and providing a clean consistent energy source.



THE SOLUTION

As part of the Bluewater Team, Normandeau is providing environmental services aimed at developing an understanding of the conditions in potential offshore areas under consideration for development of an offshore wind farm. Initial investigations, as part of the RFP process, identified baseline conditions and outlined potential detailed investigations that would be required to fully describe the impacts from construction and operation of the wind park and transmission facilities. The studies that have been identified will ultimately support the state and Federal permitting process as well as the development of a third-party EIS. Key issues that will be addressed as part of this process are:

- Impacts to fish habitat
- Impacts to commercial and recreational fishing
- Impacts to bottom communities
- Impacts to birds and bats
- Impacts to marine mammals and turtles
- Impacts to threatened and endangered species (Section 7)
- Impacts from transmission lines



As a member of the Bluewater Team, Normandeau will work closely with public stakeholders, as well as with Federal and state regulators, to address questions and to complete the permitting process in a timely manner to ensure that Bluewater Wind can provide clean energy on schedule.

About Normandeau Associates

Normandeau Associates, Inc., an employee-owned company, was founded in 1970 as an environmental consulting firm. Today, Normandeau is considered one of the nation's foremost companies in the field. Our deep and broad background as both environmental and public involvement consultants provides a wealth of knowledge and experience in disciplines ranging from environmental assessment and permitting to stakeholder interviews and facilitation.

From offices nationwide, Normandeau's staff of over 170 employees work closely with clients, regulators, and the public to seek solutions that enhance economic development, meet regulatory requirements, protect and restore natural resources, and improve communities.

Our diverse team includes marine, aquatic, wetland, and terrestrial ecologists; environmental planners; fisheries biologists and limnologists; ornithologists and botanists; soil scientists, geologists, and hydrologists; engineers; statisticians and data processing specialists; report production personnel; and public involvement professionals.

Normandeau Associates, Inc., combines experience, continuous training, hard work, and a rigorous commitment to excellence to deliver the highest possible level of service to our clients.

